

FILMING AND PHOTOGRAPHY

Somerset House has:

- Elegant blank canvas rooms
 - Sweeping staircases
 - Atmospheric lightwells
 - Picturesque terraces
 - A spectacular courtyard
 - A series of commanding rooftops
- and all manner of interesting lesser-known spaces...

Somerset House is a leading location for major film and television series, and an iconic backdrop for high profile photoshoots.

Our flexibility and ability to source lesser used spaces on-site, featuring both the historic and the contemporary, means we are always likely to have a location to raise the bar for your brief.

'I thoroughly enjoyed filming at Somerset House. A gem of a place and your team were all great. Very professional, personable and understanding of us. Thank you so much for allowing us in and for all your hard work, enabling a successful shoot in a fantastic location.'

~ Locations Manager



EXTERIOR LOCATIONS

EDMOND J. SAFRA FOUNTAIN COURT

With its neoclassical backdrop, this cobbled area, centred around the iconic fountains and surrounded on all sides by glorious 18th century architecture, is one of the grandest locations in London and can be easily transformed.

UPPER TERRACE

A firm favourite, with beautiful archways, the cobbled Upper Terrace stretches for more than 100 metres.

LIGHTWELLS AND DEADHOUSE

One level below our fountains, running along three sides of the courtyard, are the lightwells - a long-time favourite, with its unique architecture, unexpected hidden depths and an abundance of secret nooks and crannies. The Deadhouse, meanwhile, is an underground tunnel which runs directly beneath the courtyard, with eerie memorials set into the walls. A versatile space without the need for large amounts of production.

LANCASTER PLACE

An external space situated outside our New Wing, just off Waterloo Bridge.



EXTERIOR LOCATIONS

ROOF TOPS

From our commanding series of rooftops* you'll find the perfect shot of the London skyline, with views across the city, Waterloo Bridge and River Thames - taking in the Southbank, the London Eye and Westminster to the East, and St. Paul's Cathedral to the West. Ideal for high level shots, camera positions, stunts and chase scenes.

**Roof access is weather dependent and crew size is restricted.*

RIVER TERRACE

Offers views of the Southbank and the River Thames, whilst also retaining the neoclassical architecture as a backdrop.

MAKER STREET

Situated underneath Waterloo Bridge, and with camera positions from Lancaster Place, Maker Street is ideal for street scenes. Vaulted studios can also be transformed and used as a location.

All external locations require approval from Somerset House's Senior Management and PR team. Please provide information about the photo shoot/film and where the images/film will be used.



INTERIOR LOCATIONS

NELSON AND STAMP STAIRCASES

Two spectacular five-storey period staircases. Set in a rotunda, the flowing Nelson Stair soars from the basement to the Navy Board Rooms and beyond, with plenty of eye-catching flourishes. At the opposite end of the South Wing, the impressive, architecturally distinct Stamp Stair also offers a broad range of filming possibilities.

Exclusive access outside of public opening hours, after 23:00 and before 08:00. Sundays from 16:00, subject to approval.

PORTICO ROOMS

Features two balconies, one offering glorious views of the River Thames, Waterloo Bridge and the Southbank, and the other of our iconic courtyard.

NAVY BOARD ROOMS

One of our most traditional spaces, with grand chandeliers and marble backed fireplaces.

SEAMEN'S HALL

Offers a sense of grandeur with its chandeliers, dramatic pillars, stone floors and large windows.

Exclusive access available after 18:00.

[360 Footage of Somerset House Event Spaces](#)



INTERIOR LOCATIONS

LANCASTER ROOM

This room features dramatic pillars, high ceilings and exposed floorboards - set against the stunning views of the Thames. This room takes the original features of Somerset House and adds a contemporary cutting edge.

RIVER ROOMS

A versatile suite of rooms with a creative and raw aesthetic. These interlinking, open plan rooms have custom-built lighting tracks, complete with dramatic original fireplaces and exposed brick archways.

EAST AND WEST WINGS

With feature fireplaces, wooden floors and large sash windows, the East and West Wings are great film or photoshoot location. They can also be used for spacious back of house spaces during shoots.

[View our 360 Footage of Somerset House Event Spaces](#)



FILMING RATES

EXTERIOR LOCATIONS

From £5,000 to £35,000 +VAT per day, plus operational costs. Dependent on requirements and subject to approval by Senior Management. Restrictions and minimum timings and/or hours may also apply to some spaces.

ROOF (SOUTH WING, WEST WING AND NEW WING)

From £300 +VAT - £1,000 +VAT per hour (minimum of 5 hours), plus operational costs, depending on requirements.

STAIRCASES

From £800 +VAT per hour (minimum of 5 hours), plus operational costs. Out of hours.

INTERIOR LOCATIONS

- **From £4,000 +VAT for daytime hire** based on access from 07:30 - 17:00
- **From £6,500 +VAT for evening hire** based on access from 17:30 - 23:00
- **From £8,500 +VAT for all day hire** based on access from 07:30 - 23:00



These rates are as guidance only and will vary subject to requirements and impact. Back of house space and green rooms are an additional cost and are also subject to requirements. Availability is on a case-by-case basis and is dependent on Somerset House's public programme.



PHOTOGRAPHY RATES

EXTERIOR LOCATIONS

From £5,000 +VAT to £10,000 +VAT per day, plus operational costs. Dependent on requirements and subject to Senior Management approval. Restrictions and minimum timings and/or hours may also apply to some spaces.

INTERIOR LOCATIONS

- **From £4,000 +VAT for daytime hire** based on access from 07:30 - 17:00
- **From £6,500 +VAT for evening hire** based on access from 17:30 - 23:00
- **From £8,500 +VAT for all day hire** based on access from 07:30 - 23:00

HIRE DETAILS

Operational Running Costs: These are in addition to the venue hire fee and quoted on a bespoke basis, dependent on the specific requirements of the shoot. To offer an overview of operational running costs, these include - but are not limited to - an Operations Manager, security, cleaning, electrician, Wi-Fi (if needed) and portorage.

Back of house space and green rooms are available at an additional cost and are subject to requirements.

Refundable Security Deposit: A refundable security deposit is required for all bookings. The amount of deposit owed is calculated on the length of hire period and will be invoiced separately from the Hire Fee. This deposit is fully refundable up to 30 days after the shoot, subject to no damage having been caused to the building nor overrunning of the contracted timings.

Public Liability Insurance: Somerset House require all clients to have £10 million public liability insurance.

Approval: If Somerset House is to be recognisable in the shoot, the enquiry must be taken to our Senior Management Team and internal PR Team for approval.

Exclusive Access: Somerset House is a public building, open daily from 08:00 – 23:00. We can only guarantee exclusive use of our external areas and staircases out of hours. We can, on occasion, offer exclusive use of the courtyard from 18:00, subject to approval. You can shoot in our external spaces on a non-exclusive basis, for this we will staff the area to be able to hold members of the public for a few minutes at a time to enable you to get the shot you need.

On-site Parking: Although on occasion it is possible for one or two vehicles to park in our west service yard, we do not have parking on-site. There are many parking options available outside of Somerset House, close by.

Hiring Multiple Spaces: We will always initially quote for each space individually. Once we have a better idea of your full schedule and requirements for the shoot at Somerset House, we can then discuss the overall fee associated with your shoot.

Delivery Access: We are unable to take deliveries for the shoot before it is due to take place and ask that all material for the shoot is taken away after the event, as we are unable to store this. Large vehicle access is available via the courtyard out of hours (before 08:00, after 23:00).

Drones: Flying a drone at Somerset House is possible, subject to availability and approval by our Building and Estates Team. The film crew are responsible for gaining approval from the council and we must receive all relevant paperwork confirming this, in order to gain approval.

Animals: We can accommodate animals on site as part of a film or photoshoot, subject to approval. We must receive specific RAMS and animal welfare documents to support this.

Venue Guidelines: Somerset House will provide you with detailed venue guidelines for each space you work in on-site.

As a Grade I Listed building we are unable to fix to the building. We are happy to work with film/photoshoot crews to find suitable and safe solutions.

We appreciate that every film and photoshoot is unique, we encourage all Location Managers to contact us directly, so that we can discuss your specific requirements in more detail.



LONDON HAS FALLEN



X-MEN: FIRST CLASS



BRIDE & PREJUDICE



LOVE ACTUALLY



THE DUCHESS



LONDON HAS FALLEN

**SOMERSET
HOUSE**

ON SCREEN



STRICTLY COME DANCING



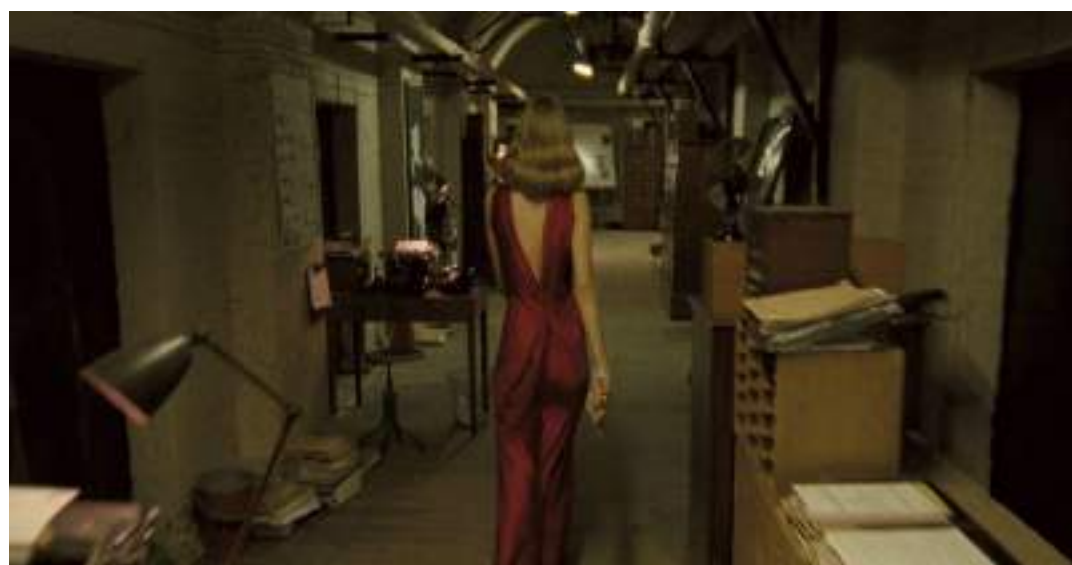
DANCING ON THE EDGE



H&M



X-MEN: FIRST CLASS

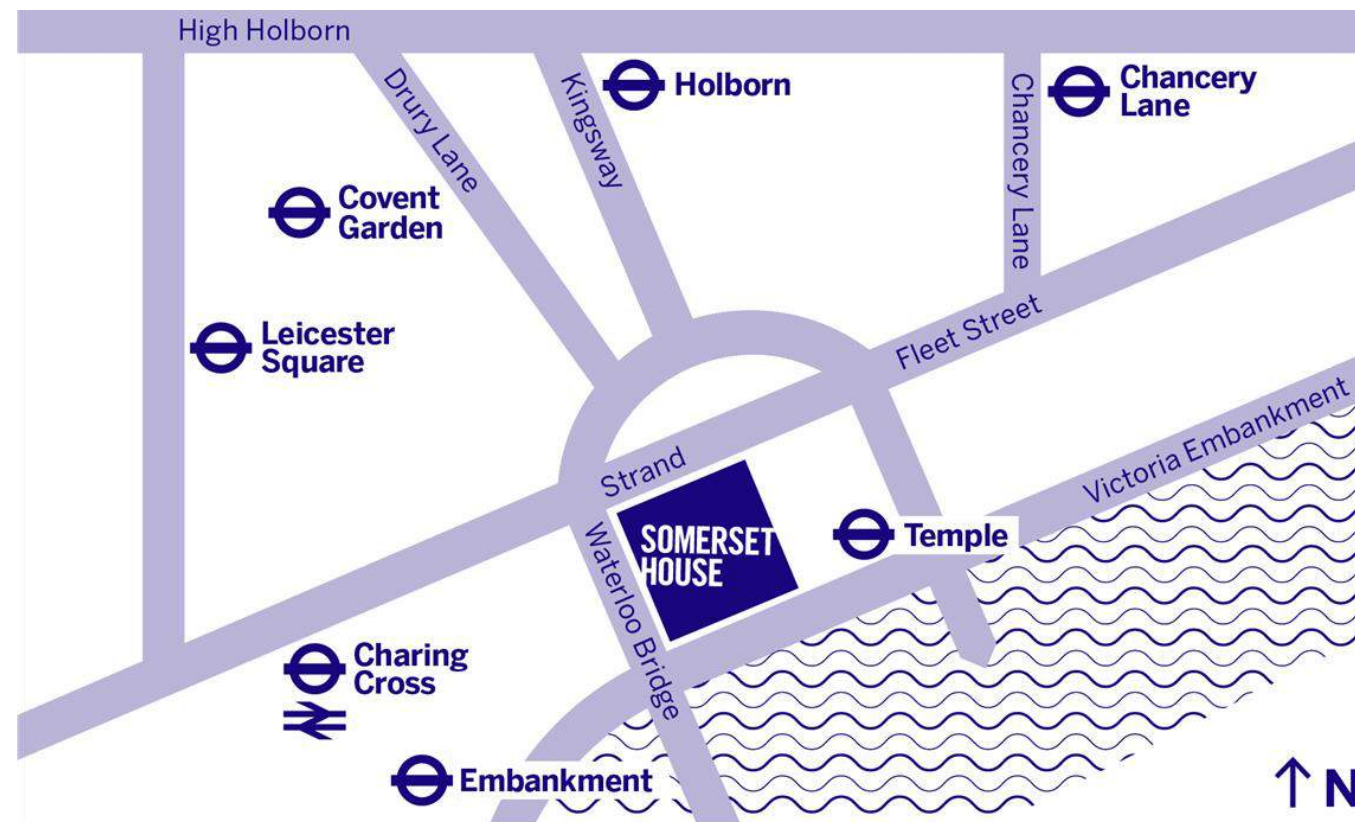


GLORIOUS 39



SUFFRAGETTE

OUR LOCATION



events@somersethouse.org.uk
+44 (0)20 7845 4618
somersethouse.org.uk/venue-hire



How to find us

Somerset House
Strand, London WC2R 1LA

By London Underground

Nearest stations

Temple (Circle & District lines; 250m, 5 mins)
Covent Garden (Piccadilly line; 650m, 8 mins)
Charing Cross (Bakerloo & Northern lines; 700m, 10 mins)
Embankment (Circle & District lines; 700m, 10 mins)
Waterloo (Bakerloo, Waterloo & City, Jubilee & Northern lines; 800m, 11 mins)

By Rail

Nearest stations

Charing Cross (700m, 10 mins)
Blackfriars (1km, 13 mins)
Waterloo (1km, 13 mins)

By River

River bus services RB1, RB2 and RB6 all stop at Embankment Pier, roughly 600 metres from Somerset House